

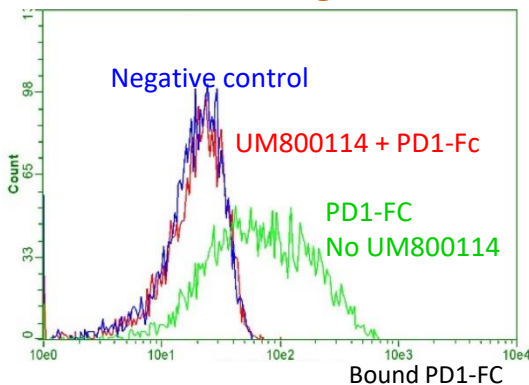
PD-1 neutralizing antibody

- PD-1 is up-regulated in activated T and B lymphocytes and is present on activated myeloid lineage cells such as monocytes, dendritic cells, and NK cells.
- PD-1 inhibits T-cell function upon binding to its ligands, PD-L1 and PD-L2, serving as a key checkpoint of the immune system.
- PD-1 and PD-L1 blocking mAbs have been demonstrated to improve the anti-tumor activities of T-cells in immunotherapy.

PD-1 UltraMAB[®] Antibody

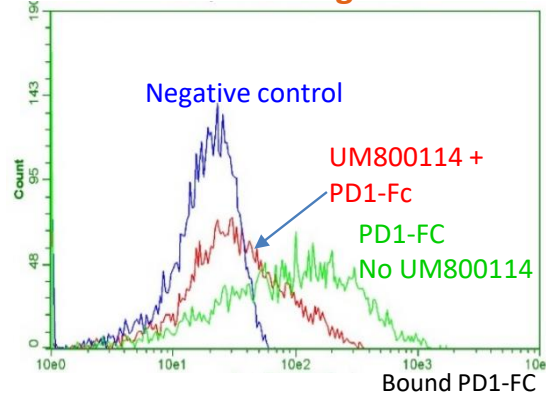
| | |
|--------------------|---|
| SKU# | UM800114 |
| Clone Name | UMAB222 |
| Target | Homo sapiens programmed cell death 1 (PD-1/PDCD1) |
| Host | Mouse |
| Reactivity | Human |
| Tested Application | FC, WB, IF Blocking both PDL1 & PDL2 |
| Dilution | FC: 1:50, WB: 1:2000, IF: 1:500 |

Block PD1 binding to PD-L1



Flow cytometric analysis of PD-L1 stable cells binding to PD1-FC. (1:50)

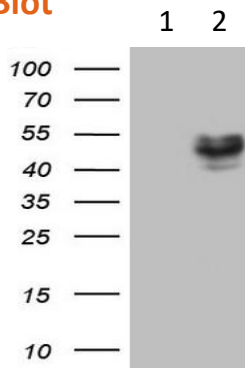
Block PD1 binding to PD-L2



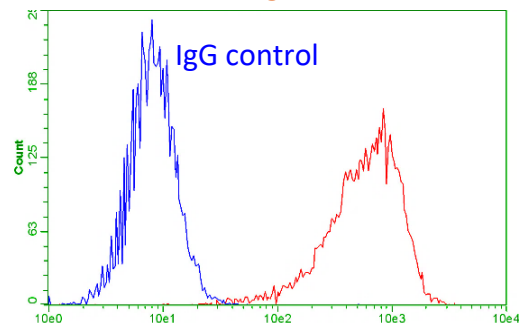
Flow cytometric analysis of PD-L2 stable cells binding to PD1-FC (1:50).

Western Blot

WB: 5ug of lysates,
1: control lysates
2: overexpression with
PD1 ORF clone (SKU:
RC210364).



Flow



Flow cytometric analysis of PD1 stable cells with UM800114 (1:50).

Antibodies against commonly studied proteins in Immuno-Oncology

| Applications | SKU | Reactivity |
|----------------|---------------------|------------|
| Flow Cytometry | TA807861, UM 800114 | H & M, H |
| Neutralization | TA807861, UM800114 | H & M, H |
| ELISA | TA807995/TA806927 | H |
| | TA807867/TA906927 | |
| | TA807867/TA806835 | |
| WB | TA807861, TA807879 | H & M, H |
| IHC | UM800091, TA806837 | H & M, H |
| IF | UM800091, TA807879 | H & M, H |

| Protein Name | Antibody Description | SKU |
|--------------|---|-------------|
| ARG1 | ARG1 mouse monoclonal antibody, clone OTI4E6 | TA502413 |
| B7-1/CD80 | CD80 mouse monoclonal antibody, clone UMAB65 | UM500055 |
| B7-H3/CD276 | Rabbit Polyclonal CD276 Antibody | TA590443 |
| B7-H4/VTCN1 | VTCN1 mouse monoclonal antibody | TA810072 |
| BTLA | BTLA mouse monoclonal antibody, clone UMAB61 | UM500052 |
| CD160 | Rabbit Polyclonal Anti-CD160 Antibody | TA809688 |
| CD19 | CD19 mouse monoclonal antibody, clone UMAB103 | UM500071 |
| CD244 | Rabbit Polyclonal Anti-CD244 Antibody | TA349773 |
| IDO1 | IDO1 mouse monoclonal antibody, clone UMAB126 | UM500091 |
| IL-10RA | IL10RA mouse monoclonal antibody, clone OTI1D10 | TA506929 |
| IL-13 | IL13 mouse monoclonal antibody, clone OTI6D3 | TA804004 |
| IL-4 | Rabbit polyclonal IL4 Antibody (C-term) | TA324803 |
| LAG3 | LAG3 mouse monoclonal antibody, clone OTI8F6 | TA807082 |
| MICA | Rabbit Polyclonal MICA Antibody | TA306443 |
| MICB | anti MIC-B monoclonal antibody, cloneB-D55 | AM31286AF-N |
| NCAM1 | NCAM1/CD56 mouse monoclonal antibody, clone UMAB194 | UM800086 |
| Notch1 | Anti-Notch1 mouse monoclonal antibody, clone OTI3E12 | TA500078 |
| PD-L1 | PD-L1/CD274 mouse monoclonal antibody, clone OTI13G7 | TA809809 |
| PD-L2 | PDL2/PDCD1LG2 mouse monoclonal antibody, clone OTI5A7 | TA808997 |
| TIM3 | HAVCR2 mouse monoclonal antibody, clone OTI2E2 | TA807034 |
| Beta Tubulin | Rabbit polyclonal anti-TUBB(beta Tubulin) antibody, Loading control | TA301569 |
| Vimentin | Vimentin (VIM) mouse monoclonal antibody, clone UMAB160 | UM800055 |

For more antibodies, please visit
www.origene.com/products/antibodies